

Welcome

Japanese Art History
ARTH 2071
Test #1 Feb. 23, 2016
Review

Test Review

- 15 minute test
- Date: Tuesday February 23, 2016
- 2:00 PM
- Part matching, part short essay
- Based on our course objectives

1

Test #1 Review

Questions # 1 - 15

- Course Objectives: – matching
 - Conduct visual analysis of the arts of Japan from Chapters One, Two and Three of the textbook
 - Identify the contextual elements in Japanese art
- Total 30 points, 2 point each
 - The artwork will be projected on the screen and you choose the best of three statements about it.
 - You can ask for a handout, but in black and white, if this will help you.

2

Test #1 Review

Questions # 1 - 15

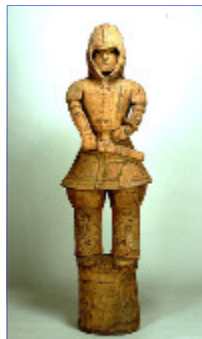
- Review the summaries of each historical period in slides # 5 – 11.
- Review the 10 artworks in slides # 23 - 32 in this presentation. All artworks are discussed your textbook
- Review your notes and the PPTs from Chapters One, Two and Three
- Can you match the artwork in the next slide to the two statements that are true?

3

Test #1 Review

Questions # 1 - 15

1. A variety of incised lines in the ceramic figure show the details of the guardian figure from an imperial tomb
2. During the Yayoi Period rulers built tombs with artworks with mythological symbols.
3. During the Kofun Period the Imperial family had enough religious or political power to construct large keyhole tombs.



4

Test #1 Review

Question #1 - 15

- Jomon Period 11,000 - 400 BC
 - Distinctive flame cord pottery is use for rituals
 - Ceramic human figures are heavily decorated
 - Ritual areas are marked by stone circles
- Artwork:
 - Deep Bowl With Sculptural Rim, Mason 7 *

5

Test #1 Review

Question #1 -15



- Yayoi Period 400 BC - 300 AD
 - Burial goods first include the sword, jewel and mirror
 - Large, bronze bells produced
 - First appearance of raised granary buildings
- Artworks:
 - Dotaku Bell, Mason 20

6

Test #1 Review

Question #1 - 15



- Kofun Period 300 - 710 AD
 - Imperial family and aristocrats buried in keyhole tombs
 - Ceramic cylinder Haniwa figures placed around tombs
 - Paintings inside tombs often show Chinese influences
- Artwork:
 - Haniwa Figure, Mason 28 *

7

Test #1 Review

Question #1 - 15



- Asuka & Hakuho Period 552 -710
 - Ise Shinto Shrine used native Japanese architectural style
 - Buddhist images first brought to Japan
 - Emperors and aristocrats built first large Buddhist temple complexes
- Artworks:
 - Ise Shrine, Mason 60
 - Elevation Five-Storied Pagoda, Mason 73
 - Shaka Triad, Mason 86

8

Test #1 Review

Questions # 1 - 15



- Nara Period 710 - 794 AD
 - Bronze, clay and dry-lacquer sculptures created in workshops headed by master sculptors
 - Now Japanese aesthetic using wood and more plastic materials and techniques
 - Realism reaches new heights and portrait sculptures created
- Artworks
 - Lady Under A Tree, Mason 51
 - Yakushi Triad, Mason 103
 - Zochoten, Mason 114
 - E Inga Kyo Handscroll, Mason 124

9

Test #1 Review

Questions # 1 - 15



- Heian Period 794 - 1185 AD
 - Court aristocrats were both patrons and artists, favoring subjects showing their lives
 - Shinden architecture developed, first for residences and later for temples and shrines
 - Images of Buddha became softer and more approachable
- Artworks:
 - See next slide

10

Test #1 Review

Questions # 1 - 15



- Heian Period Artworks 794 - 1185
 - Diagram of Shinden Architecture, Mason 128
 - Portrait of Poetess Saigo Nyogo Yoshiko, Mason 137
 - Genji Monogatari Emaki, Mason 140
 - Kongokai Mandara, Mason 153
 - Fudo Myoo, Mason 158
 - Seated Buddha, Muroji, Mason 165
 - Byodoin, Mason 172
 - Sanjusangendo Sculptures, Mason 188

11

Test #1 Review

Questions # 16



- **Course Objectives:**
 - Analyze the formal and contextual elements in Japanese art
 - Communicate what you have learned in writing.
- You will write an essay analyzing your **favorite artwork** from Chapter One, Two or Three. **Do this BEFORE the test and bring it to class already completed.** 35 points
- This essay is a major portion of your test. You will write an essay analyzing the formal and contextual elements following the guidelines in your checklist and the essay writing guidelines.
- The artwork you analyze can be from the textbook or from your own research using links on the class web site. It must be from pre-historic to 794 or the 12th century AD.

12

Test #1 Review

Question # 17



- **Course Objective:**
 - compare and contrast Western artistic traditions with Japanese artistic traditions to deepen his/her knowledge of the visual arts.
- You will write an essay **comparing and contrasting** one Japanese artwork that we have studied in Chapter One, Two or Three with one Western artwork. **Do this BEFORE the test and bring it to class already completed.** 35 points
- This essay is a major portion of your test. You will write an essay analyzing the formal and contextual elements following the guidelines in your checklist and the essay writing guidelines.
- You will choose the two artworks. Examples are on slides # 16 – 18.

13

Test #1 Review

Question #16 & 17



- Identify and discuss the most important element of design
- Identify and discuss the most important principal of design
- Identify and discuss the most important element of content
- Identify and discuss the most important element of composition
- Identify and discuss the two most important contextual elements
- Identify why it was made, who made it, and how it was used
- Explain why this is your favorite artwork (Question #16 only)

14

Test #1 Review

Art Essay Guidelines



- Identify the type of artwork - sculpture, painting
- Identify each section - formal or contextual
- Use the proper terms - balance, politics
- Describe the element - bright blue color, straight lines showing details of armor
- Identify why the formal element is important - the bright colors make the person look realistic
- Be specific about what the contextual element tells us about - why the artwork was created, who created the artwork
- **Check your handout on the class web site for more details and samples**

15

Test #1 Review

Question # 17 Compare/Contrast



Shaka Triad
Tori Busshi



Christ Crucified
French
Medieval Ivory

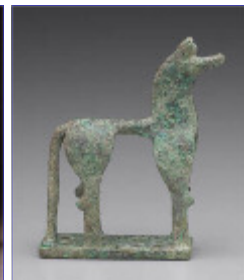
16

Test #1 Review

Question #17 Compare/Contrast



Kofun Horse
4th century



Figurine of a Horse
Greek, 8th century BC

17

Test #1 Review

Question # 17 Compare/Contrast



East Pagoda Yakushiji
First half 8th century



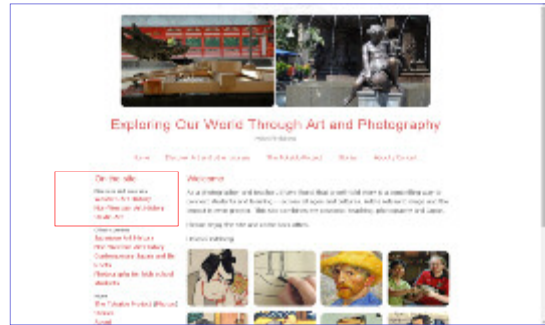
St. Xavier Church
Cincinnati, OH

18

Test #1 Review

Resources for Question # 17

- www.helenrindsberg.com Western Art History course



19

Test #1 Review

Resources for Question # 17



20

Test #1 Review

Test #1 Review

- I'll supply questions #1 - 15 of the test on a handout.
- You supply the pen or pencil and the brain power.
- You complete questions #16 and #17 **BEFORE** class and attach the print-outs to your finished test.
- **Follow the writing guidelines in your handout.** Essays are to be typed and double spaced. **For question #16 and 17 paste (digitally) images of artwork into WORD document.** Identify the source of your artworks with the URL.
- Don't panic, follow these study guidelines.

21

Test #1 Review

Questions # 1 - 15 Practice

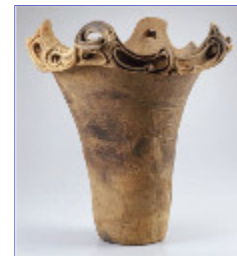
- You can use the next ten slides to test your skills of analysis.
- For your take-home essays, remember that it is required that you discuss why the element or principal is the most important and how it helps us understand the artwork.

22

Test #1 Review

Questions # 1 - 15

- Most important Element of Design
 - Line
 - Color
 - Texture
 - Shape
 - Space



Flame Ware Vessel
c. 2500 - 2400 BC
Mason fig. 7

23

Test #1 Review

Questions # 1 - 15

- Most important Element of Design
 - Line
 - Color
 - Texture
 - Shape
 - Space



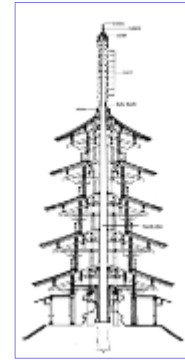
Genji Monogatari (Tale of Genji)
1st half 12th century
Mason fig. 140

24

Test #1 Review

Questions # 1 - 15

- Most important Principle of Design
 - Repetition
 - Emphasis
 - Balance
 - Unity
 - Contrast



Elevation Five-Storyed
Pagoda
Horyuji
Mason fig. 73

25

Test #1 Review

Questions # 1 - 15

- Most important Principle of Design
 - Repetition
 - Emphasis
 - Balance
 - Unity
 - Contrast



Kongokai Mandara (Diamond World),
H: 72 inches
2nd half 9th century
Mason fig. 153

26

Test #1 Review

Questions # 1 - 15

- Most important Element of Content
 - Subject Matter
 - Ideas in work
 - Intention of artist
 - Symbols



Portrait of the Poetess Saigo Nyogo Yoshiko
Late 12th/13th century
Mason fig. 137

27

Test #1 Review

Questions # 1 - 15

- Most important Element of Composition
 - Focus
 - Placement
 - Lighting
 - Background
 - Use of shapes



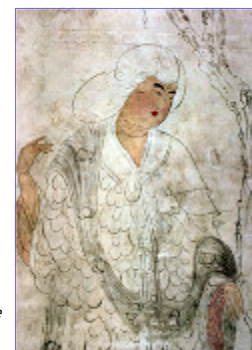
Zochoten
Kaidanin Hall, Todaiji
Mid-8th century H: 65 inches
Mason fig. 114 *

28

Test #1 Review

Questions # 1 - 15

- Most important Element of Composition
 - Focus
 - Placement
 - Lighting
 - Background
 - Use of shapes



Lady Under A Tree
c. 752-56 Shosoin, Todaiji
Mason fig. 51

29

Test #1 Review

Questions # 1 - 15

- Most important contextual element
 - Religion
 - Politics
 - Economics
 - Social Organization
 - Artistic Influences
 - International Trade



Dotaku (Bronze Bell)
H: 17 inches
2nd – 1st century BC
Mason fig. 20

30

Test #1 Review

Questions # 1 - 15

- Most important contextual element
 - Religion
 - Politics
 - Economics
 - Social Organization
 - Artistic Influences
 - International Trade



Ise Inner Shrine
Founded 1st century
Mason fig. 60

31

Test #1 Review

Question # 16

- Final requirement of your favorite artwork essay:
 - Why was the artwork created?
 - Who used it?
 - How was it used?

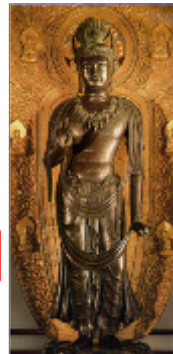


E Inga Kyo Handscroll
mid-8th century
Mason fig. 124 *

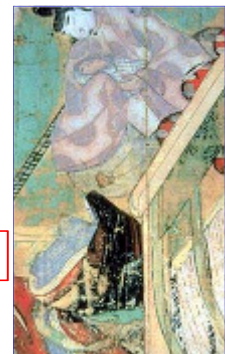
32

Test #1 Review

Choose one and analyze on your worksheet



A



B

33

Test #1 Review